

SUBELEMENT T3 – Operating practices

– 4 exam questions – 4 groups

T3A – Choosing an operating frequency, calling CQ, calling another station, test transmissions – 1 exam question

T3B – Use of minimum power, band plans, repeater coordination, mode restricted sub-bands – 1 exam question

T3C – Courtesy and respect for others, sensitive subject areas, obscene and indecent language – 1 exam question

T3D – Interference to and from consumer devices, public relations, intentional and unintentional interference – 1 exam question

Origin CQ

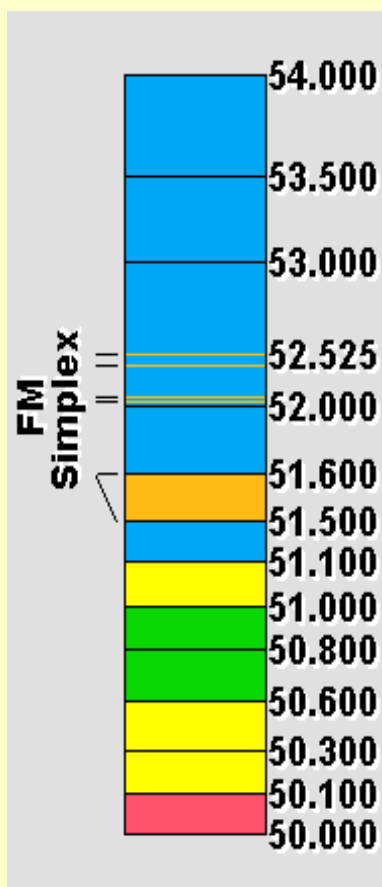
The telegraph call CQ was born on the English Telegraph nearly a century ago as a signal meaning "All stations. A notification to all postal telegraph offices to receive the message." Like many other telegraph terms which originated on the landlines, CQ was brought over into radio and used as a general call to all ships by the Marconi Company. Other companies used KA until the London Convention of 1912, which adopted CQ as the international general call or "attention" signal. CQ still means, literally, "attention" but in amateur radio its meaning is perhaps more accurately described by Thomas Raddell who compared it to yelling "Hey, Mac!" down a drain pipe.

But why the letters CQ? From the French, *sécurité*, (safety or, as intended here, pay attention)

International Telecommunication Union (ITU) phonetic alphabet

A Alpha	H Hotel	O Oscar	V Victor
B Bravo	I India	P Papa	W Whiskey
C Charlie	J Juliet	Q Quebec	X X-ray
D Delta	K Kilo	R Romeo	Y Yankee
E Echo	L Lima	S Sierra	Z Zulu
F Foxtrot	M Mike	T Tango	
G Golf	N November	U Uniform	

A Band Plan is a voluntary guideline for using different operating modes within an amateur band.



50.000-50.100: CW - *No voice modes allowed per FCC section §97.305*

50.060-50.080: CW/Beacon Subband

50.100-50.300: Phone (SSB), etc. (no FM voice)

50.100-50.125: DX Window

50.300-50.600: All modes (simplex)

50.600-50.800: Digital modes (e.g. Packet)

50.800-51.000: Radio Control (R/C)

51.000-51.100: "Pacific DX window" (SSB/CW)

51.120-51.480: 6 Meter FM Repeater Inputs (areas w/500 KHz split)

51.500-51.600: Simplex FM, 6 channels: **51.500, 51.520, 51.540, 51.560, 51.580, and 51.600**

51.620-51.980: 6 Meter FM Repeater Outputs (areas w/500 KHz split)

52.000-52.480: 6 Meter FM Repeater Inputs (for 500 KHz and 1 MHz split)

Note: **52.525, 52.400, 52.040, and 52.020** are widely used for simplex operation with **52.525** being the "national simplex" frequency.

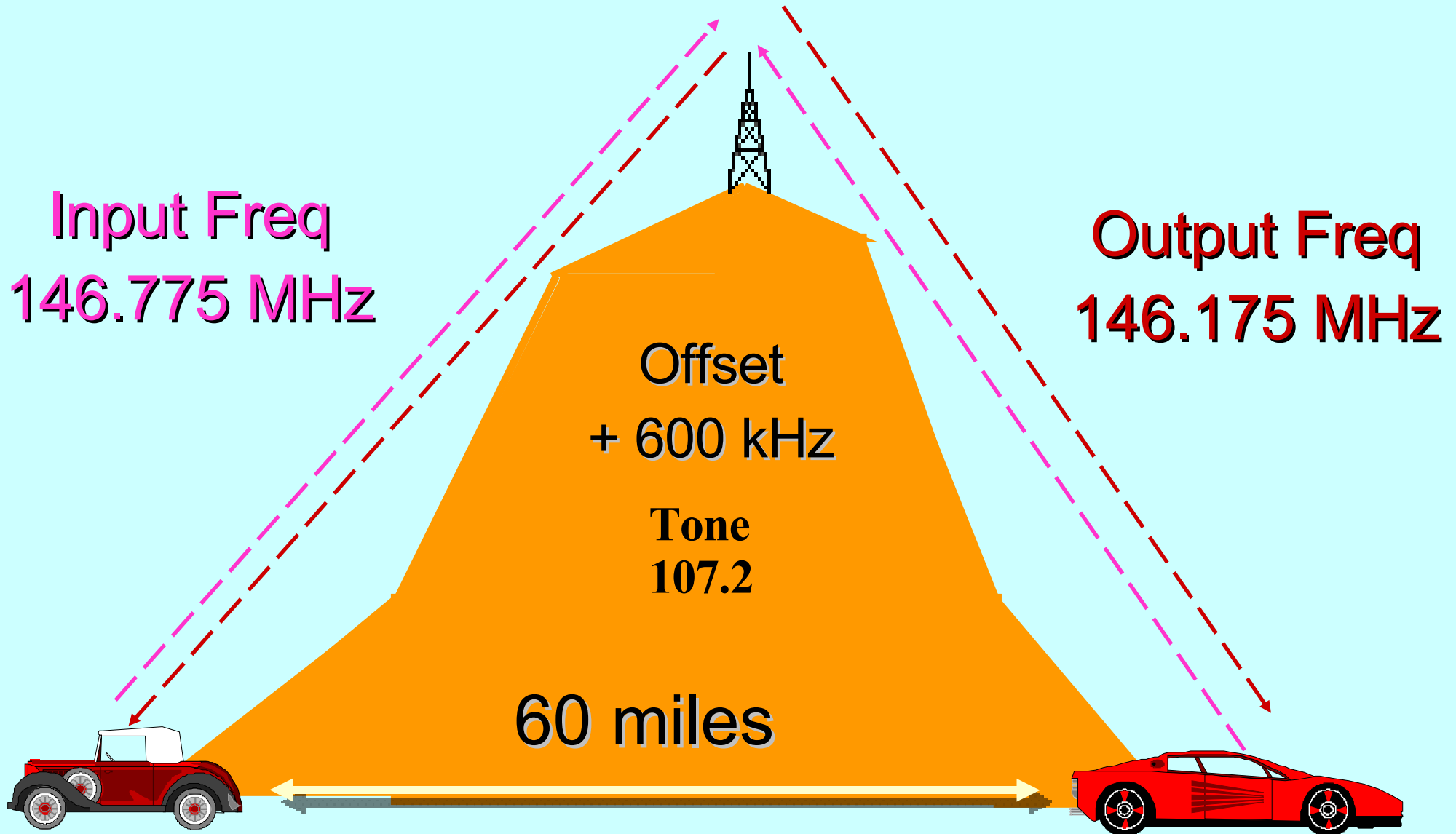
52.500-52.980: 6 Meter FM Repeater Outputs

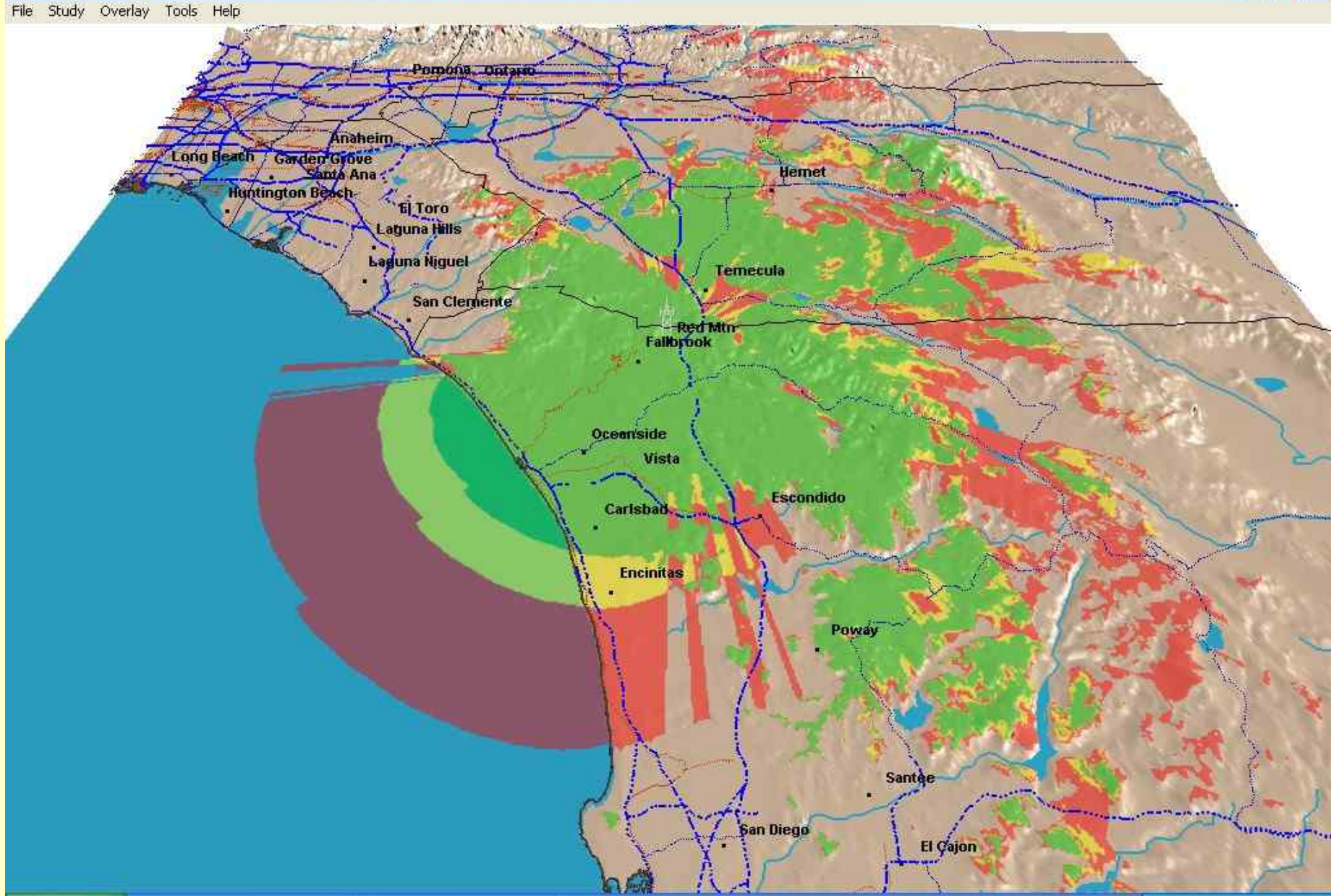
53.000-53.480: 6 Meter FM Repeater Inputs and Repeater Outputs

53.500-53.980: 6 Meter FM Repeater Outputs

Repeater Operation

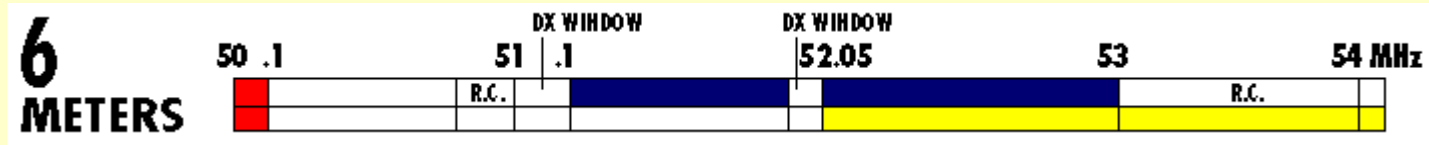
Preview



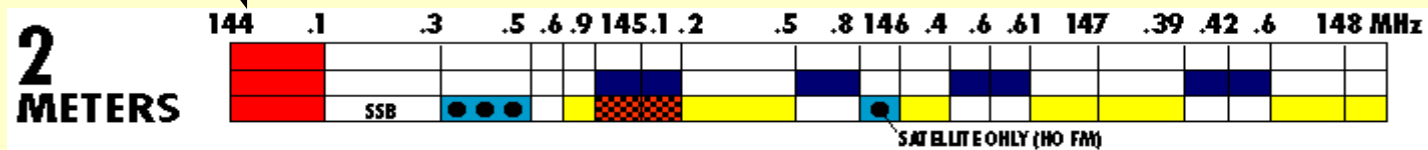


N6FQ Repeater Coverage Map - Repeater is located on Red Mountain, East of Downtown Fallbrook

Mode Restricted Sub-bands



CW Only



1 ¼ Meter has a sub-band from 219-220 Mhz for data signals of less than 50 Watts PEP

RACES



- ◆ RACES is the Radio Amateur Civil Emergency Service